

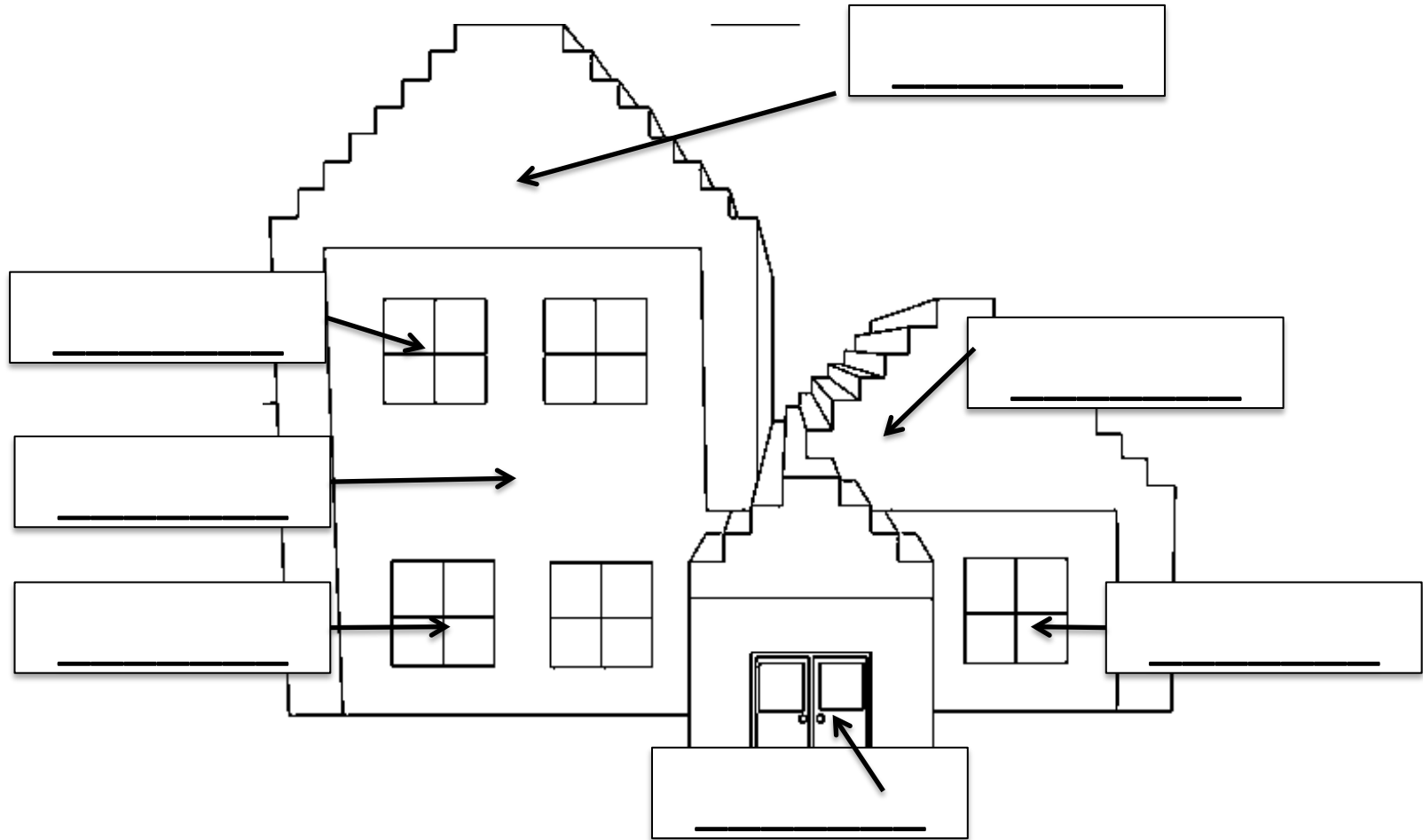
HOUSE

ACTIVITY BOOK



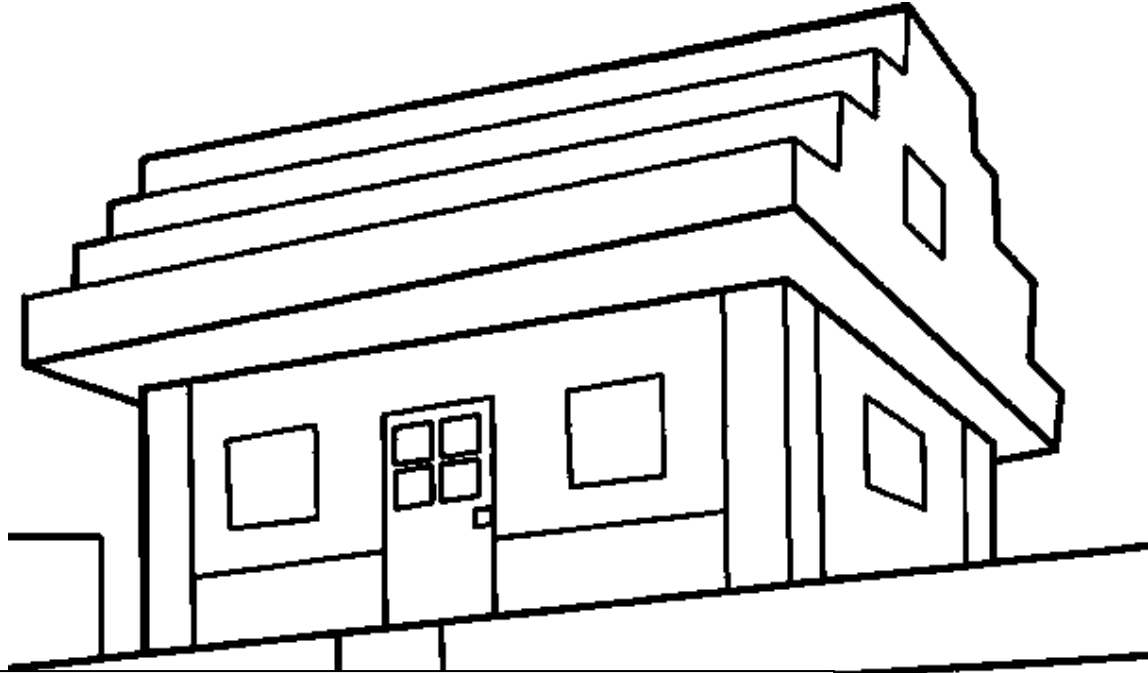
Presentation by Rosa Kofanova

1. Choose and write the right words.



window, door, roof, wall.

2. Read and colour the house.



1. Colour the roof brown.
2. Colour the windows blue.
3. Colour the walls orange.
4. Colour the door brown.

3. Read and write the right words from the box.

stove, sink, fridge, sofa, cupboard, TV , shelf

1. We wash dishes in the _____.
2. We cook food on the _____.
3. We store food in_____.
4. We store plates, cups in_____.
5. We can wash fruits and vegetables in _____.
6. We can make soup and fry meat on_____.
7. We sit on the _____ and watch_____.
8. We put books on_____.

4. Read and write the right words form the box. Cross the wrong words.

We put books on _____.

the **shelf**.

the **arm-chair**.

the **TV** .

We sit on _____.

the **arm-chair**.

the **TV**.

the **shelf**.

I put my clothes in_____.

the **wardrobe**.

the **bookcase**.

the **TV set**.

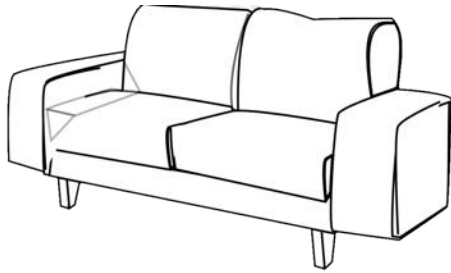
We sleep on _____.

the **table**.

the **bookcase**.

the **bed**.

5. Answer the questions. Write and colour.



What is it?

It's _____.

In what room can we see it?

In _____. It's red.

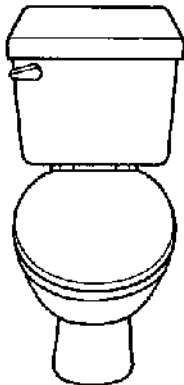


What is it?

It's _____.

In what room can we see it?

In _____. It's brown



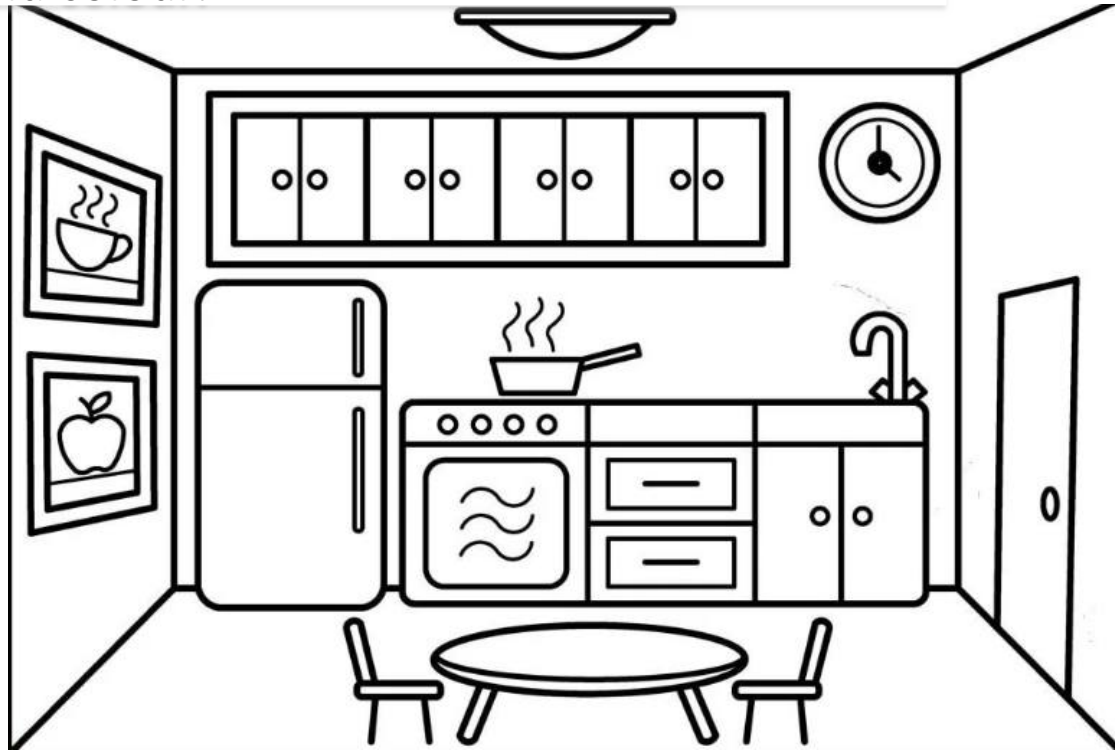
What is it?

It's _____.

In what room can we see it?

In _____. It's white.

6. Read and colour.



1. Colour the door brown.
2. Colour the fridge blue.
3. Colour the table orange.
4. Colour the stove black.
5. Colour the cupboards blue.
6. Colour the sink yellow.

7. Answer the questions.

1. Where is the bed? It's in the bedroom.
2. Where is the stove? _____.
3. Where is the sofa? _____.
4. Where is the TV? _____.
5. Where is the fridge? _____.
6. Where is the bathtub? _____.
7. Where is the table? _____.
8. Where is the cupboard? _____.
9. Where is the wardrobe? _____.
10. Where is the arm-chair? _____.

Автор методического пособия
Кофанова Роза
8 (918) 468 19 11

Студия изучения английского языка
Speak up

english_novorossiysk
Новороссийск 2020

